





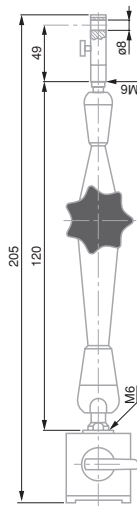
Measuring Supports and Auxiliary Equipment



TESA measuring supports have been designed to offer the best holding stability for instruments such as dial gauges, lever dial test indicators and probes. Stability is the prime requirement needed to reduce the related uncertainties in a measurement method or set-up.



-  Base with vee recess and 1 magnetic flat face. Disengageable of magnet possible. Duralumin articulations.
-  Dovetail clamp with a Ø 8 mm clamping bore
-  0,4 kg
-  Supplied without measuring instrument



UNIVERSAL SUPPORTS



Magnetic measuring support with suction base or articulated arm.

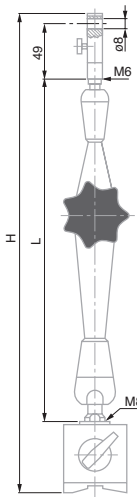
INTERAPID Magnetic Support with Articulated Arm (small)



Magnetic support with articulated arm

No	=	N	H mm	L mm	Base mm	Consisting of:
01639025		≈ 170	205	120	30 x 30 x 30	<ul style="list-style-type: none"> – 1 articulated arm length 120 mm – 1 dovetail clamp with fine adjustment – 1 magnetic base 30 x 30 x 30 (L x W x H)

-  Magnetic base has 1 prismatic and 2 flat faces. Articulations made from duralumin. Disengageable permanent magnet. Dovetail clamp with a Ø 8 mm clamping bore.
-  Supplied without measuring instrument



INTERAPID Magnetic Support with Articulated Arm

Simple and secure locking using a single rotating knob
- highly rigid arm and articulation.



Magnetic support with articulated arm

No	=	N	V-Base for Ø, mm	Fine adjust	H mm	L mm	Base mm	Mass kg	Consisting of:
01639022		≈ 800	30 ÷ 150	●	310	200	60 x 50 x 55	1,45	<ul style="list-style-type: none"> – Articulated arm – Clamp – Magnetic base
01639023		≈ 800	30 ÷ 150	●	390	280	60 x 50 x 55	1,85	<ul style="list-style-type: none"> – Articulated arm – Clamp – Magnetic base



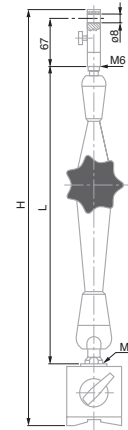
INTERAPID Magnetic Support with High Precision Articulated Arm

Magnetic support with high precision articulated arm and fine adjustment for measurements that need repeatability in the range of μm .

Simple and secure locking with a two-position knob. Highly rigid arm and articulation.



Magnetic support with high precision articulated arm



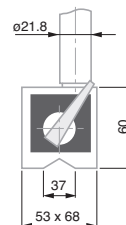
A Magnetic base has 1 prismatic and 2 flat faces. Articulations made from duralumin. Disengageable permanent magnet. Dovetail clamp with a $\varnothing 8$ mm clamping bore.

Supplied without measuring instrument

No	=	N	V-Base for \varnothing , mm	Fine adjust	H mm	L mm	Base mm	Consisting of:
01639053	INTERAPID High Precision Magnetic Support with Articulated Arm	≈ 1000	$30 \div 150$	●	440	320	73 x 50 x 55	<ul style="list-style-type: none"> Articulated Arm Clamp Magnetic base

INTERAPID Magnetic Support with Flexible Arm

For measurements in hard to reach locations. Instant and reliable locking through lever control.





H Holding force on a flat surface ≈ 1000 N

A The magnetic base has 1 prismatic and 2 flat faces. Disengageable permanent magnet. Full length 350 mm. Dovetail clamp with an $\varnothing 8$ mm clamping bore.

Supplied without measuring instrument

No	=
01639020	Magnetic Support with Flexible Arm

-  Switchable magnet.
Clamp with Ø 8 mm
clamping bore
-  Supplied without
measuring
instrument

INTERAPID Inclinable Magnetic Support

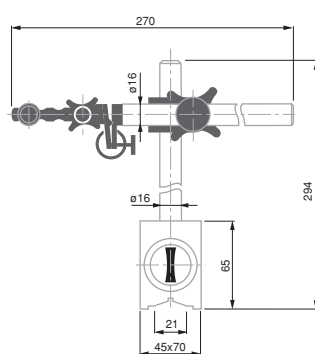
Standard model and models with strong holding force



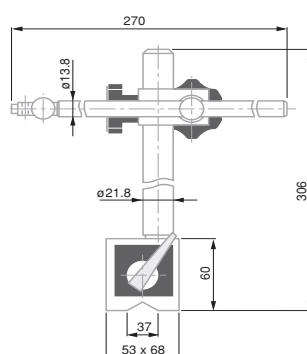
01639017



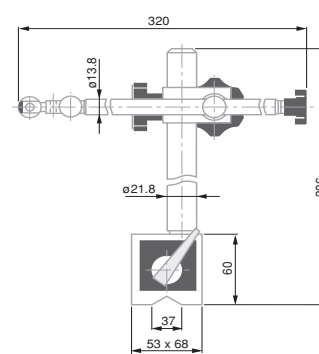
01639019



01639017







01639018



01639019



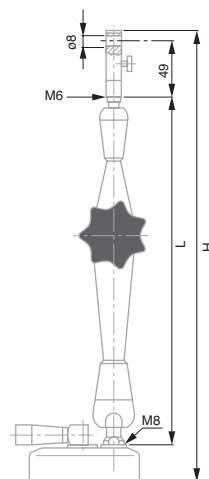
No	=	 N	 V-Base for Ø, mm		 Fine adjust
01639017	INTERAPID magnetic support with V-base, 600 N	≈ 600	70 ÷ 220	Standard Version	●
01639018	INTERAPID magnetic support with V-base, 1000 N	≈ 1000	70 ÷ 220	Strong magnetic holding force	—
01639019	INTERAPID magnetic support with V-base, 1000 N	≈ 1000	70 ÷ 220	Strong magnetic holding force	●



INTERAPID Support with Suction Base and Articulated Arm

Holds firmly on any smooth and flat surface

- Clamps instantly and reliably using a suction lever switch.
- Highly rigid articulated arm.
- Free from magnetic fields.





A Round suction base made of aluminium (Ø 88 mm, height 28 mm) with flat suction base. Articulations made from duralumin. Suction controlled by lever switch. Dovetail clamp with an Ø 8 mm clamping bore.

1.1 kg

Supplied without measuring instrument

No	=	N	Fine adjustment	H, mm	L, mm	Consisting of:
01639024	INTERAPID Measuring support with suction base and articulated arm	≈ 400	●	363	280	<ul style="list-style-type: none"> – Articulated arm – Fine adjust clamp – Round suction base

 Measuring table and column in hardened steel.

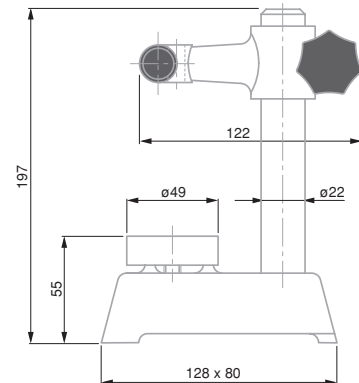
 Measuring arm with $\varnothing 8$ mm clamping bore, without fine adjustment. Measuring span: 48 mm.

 2,7 kg

 Supplied without measuring instrument

INTERAPID Small Measuring Support and Table $\varnothing 49$ mm

Round steel measuring table



Application example with DIGICO indicator

No

=




mm
0 ÷ 100




mm
49

01639006 INTERAPID small support with $\varnothing 49$ mm measuring table

 Cast iron base

 Base with front support face. Clamp for $\varnothing 8$ mm mounting rod or dial gauge with lug back. Model No 01639003 also with dovetail clamp.

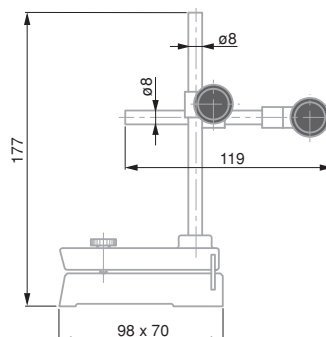
 1,3 kg (01639003)
4,35 kg (01639004)

 Supplied without measuring instrument

INTERAPID Measuring Support with Inclined Frontal Arm



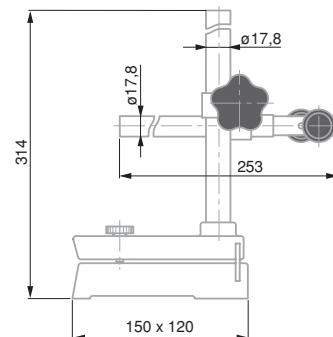
01639003



01939003



01639004



01939004

No

=



01639003 INTERAPID Measuring Support with Inclined Frontal Arm H = 177 mm

01639004 INTERAPID Measuring Support with Inclined Frontal Arm H = 314 mm

Used in conjunction with:

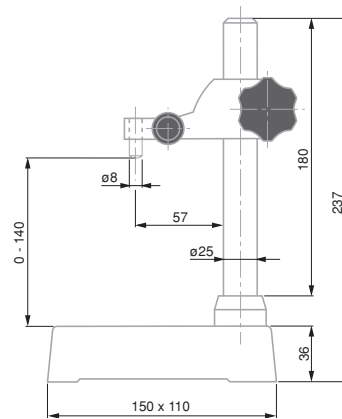
Lever dial test indicators, small dial gauges

Lever dial test indicators, small dial gauges, precision indicators, probes etc.



INTERAPID UA 1 Table Measuring Support with Ground Table Surface

Basic model without fine adjustment



Measuring table: cast iron. Column: chrome-plated steel, Arm: spheroidal graphite cast iron.

Measuring surface of table: ground. Column: Can be dismantled. Measuring arm with Ø 8 mm clamp.

3 kg

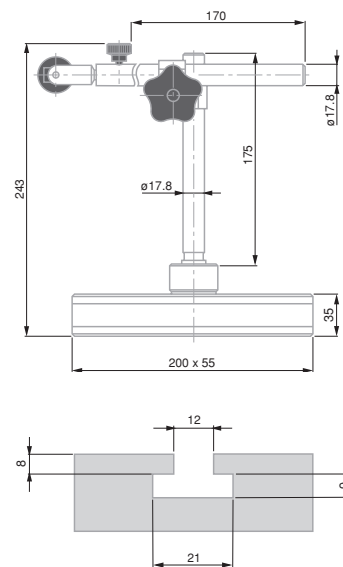
Supplied without measuring instrument

01639008	INTERAPID UA 1 measuring support with table	mm 0 ÷ 140	mm 100 x 100

INTERAPID UD12 Support

Medium sized mobile measuring support for luse with ever type dial test indicators, dial gauges, precision indicators, electronic probes etc.

With fine adjustment mechanism.



Cast iron base

Stand with lateral guiding faces. T-slot for vertical column. 2 rigid articulations

3.3 kg

Supplied without measuring instrument

		01639000 UD 12 universal support
COMPOSÉ DE:		
01840105	Tige de fixation à queue d'aronde Ø 8 mm	
01640100	UDZ 3 Mounting rod and UDZ3 clamp Ø 8 mm clamp for UD 12	

3 µm in accordance with DIN 876 T1, class 00

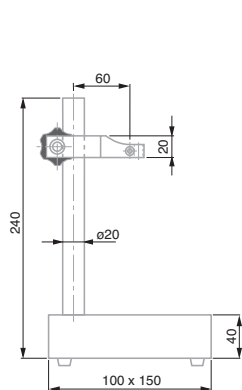
01639035: black burnished column with Ø 8 mm clamping bore.

01639029: chrome plated column with thread and threaded ring for adjusting the height of the measuring arm. Ø 8 mm clamping bore. Grooved measuring face.

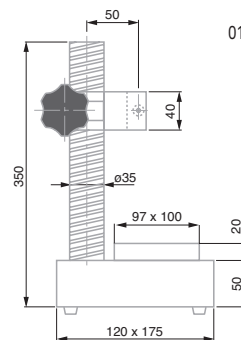
01639033: Chrome plated column. Horizontal sliding arm. Ø 4 mm or 8 mm bore for a dovetail clamp or lug.

Supplied without measuring instrument

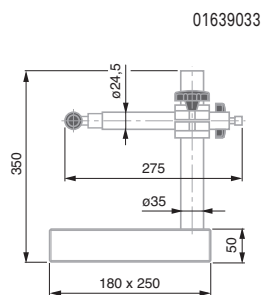
INTERRAPID Table Measuring Stands with Granite Grade 00



01639035



01639029



01639033



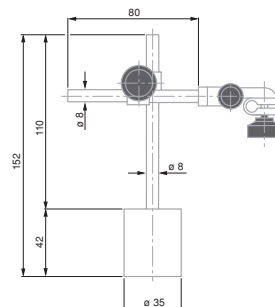
No	=	mm	mm	Measuring surface	Fine adjustment	Measuring table mm	Column height mm	Working surface mm	Span mm	kg
01639035	Table measuring support with granite, column Ø 20	0 ÷ 170	20	Granite	–	100 x 150 x 40	200	100 x 115	50,0	2,6
01639029	Slotted table measuring support with granite, threaded column Ø 35	0 ÷ 225	35	Hardened steel	●	120 x 175 x 50	300	100 x 100	68,5	8,1
01639033	Table measuring support with granite, column Ø 35	0 ÷ 260	35	Granite	●	180 x 250 x 50	300	180 x 200	Adjustable	10,5







SMALL MAGNETIC SUPPORTS

Ideal for lever type dial test indicators, and dial gauges up to 40 mm diameter
- With 2 articulation joints and fine adjustment.

Small magnetic support UJ 15



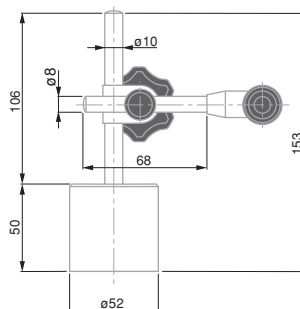
01639007 + 01640501
with dial test indicator





-  Holding force on a flat surface: ≈ 220 N
-  Rounded base with permanent magnet
-  0,47 kg
-  Supplied without measuring instrument



01639007 Magnetic support INTERAPID UJ15, dovetail clamp and $\varnothing 8$ mm cylindrical clamping

Small magnetic support UJ 15G



-  Holding force on a flat surface: ≥ 350 N
-  Rounded base with permanent magnet
-  0,93 kg
-  Supplied without measuring instrument







01639016 UJ Magnetic support

Accessories for Small Magnetic Stands



01640501 Steel base plate for UJ15 or UJ15G that become movable

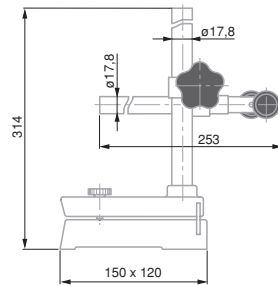
-  50 x 80 x 20 mm
-  0,60 kg




-  Cast iron table. Chrome plated steel column
-  Support base: Ground measuring face. 2 T-slots. Removable column.
-  Supplied without measuring instrument
-  Support base only: 4,85 kg
Measuring arm: 0,85 kg
Sliding arm: 1,75 kg


UA 30 MEASURING STAND

Base for mounting special fixtures adapted for series inspection

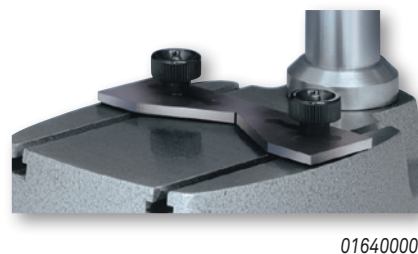
INTERAPID UA 30 Measuring Stand, Without Measuring Arm



No	=			
01639009	INTERAPID UA 30 measuring support with table, without measuring arm	mm 0 ÷ 175	in 0 ÷ 6.89	mm 125 x 115

-  Measuring arm 01610200: With fine adjustment. 1 mm travel. Ø 8 mm clamping bore. Sliding arm 01610201: Sliding holder for TESA YA dial gauges. Adjustable swinging movement. Clamping bore Ø 13 mm. Length of travel 35, 57 or 80 mm. Measuring span 60 mm. Depth stop plate 01640000: Dimensions: 115 x 35 x 3,5 mm. 120° vee recess for Ø ≤ 120 mm, 2 tightening screws.

Accessories for UA 30



No	=
01610200	UK 20 measuring arm with fine adjustment for UA30 support
01610201	UK 25 sliding arm. Used with TESA YA for stationary bore measurement on UA30 support
01640000	UAZ 10 depth stop plate for UA 30



EQUIPEMENT AUXILIAIRES

INTERAPID Depth Foot with a Flat Face



No	=		
01639046	Depth foot with flat face	mm	mm
		80 x 16	8

INTERAPID Depth Foot with Prismatic Measuring Face

For measuring the depth of key slots on cylindrical shafts and determining circularity errors etc.



No	=						
		Diameter	Diameter	Width	Width	Clamp	Clamp
		mm	in	mm	in	mm	in
01639047	Depth foot with prismatic measuring face	10 ÷ 100	0.39 ÷ 3.9	16	0.64	8	0.315

Brown & Sharpe CENTER FINDER Centering Tool

Practical for aligning the centre of a bore with respect to the spindle axis of a machine tool

- Without the clamping shaft, it can also serve as small magnetic support
- Allows the clamping of a dial test indicator, either a standard or perpendicular model.



No	=
06769006	B&S CENTER FINDER centering tool

- Hardened steel
- Lapped measuring faces. Clamp with lock for mounting a dial gauge or probe
- Supplied without measuring instrument

- Hardened steel
- Lapped measuring faces. Clamp with lock for mounting a dial gauge or probe
- Supplied without measuring instrument

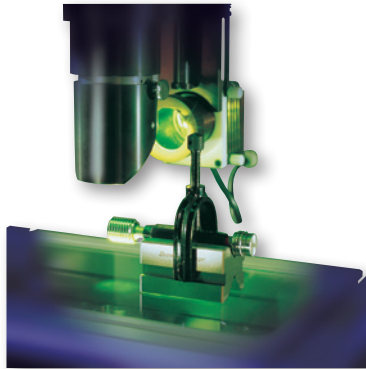
- Center Finder consisting of the following components:
 - cylindrical shank for clamping on the chuck of a machine tool.
 - powerful round magnetic base with strong holding capacity.
 - swivel joint and dovetail collar for clamping a lever-type dial test indicator.




-  Hardened steel
-  Ground finish for support and vee faces
-  Not available as individual components






Brown & Sharpe V-Block Set with Clamping Bridge

V-blocks with frames for clamping cylindrical parts diameters ranging from 0,7 to 40 mm.

Can be used for machining or inspecting workpieces





No	=				
06769007	Set of B&S V-blocks	Clamping Range, mm 0,7 ÷ 40	Clamping Range, in 0.3 ÷ 9/32	Consisting of:	
				1 pair of V-blocks	5 ÷ 40 mm
				1 extra V-block	3 ÷ 8 mm
				1 extra V-block	1,5 ÷ 5 mm
				5 extra V-blocks	0,7 ÷ 3,5 mm
				2 in-between bridges	
				2 large frames	
				1 small frame	

-  7 µm for each pair
-  2,5 µm for the 6 faces
-  Hardened steel, 55 to 60 HRC
-  Each block has 18 through bores Ø 9,53 mm and 5 bores with M10 threads
-  Supplied with five M10 socket head screws and one 8 mm socket wrench

Brown & Sharpe Positioning Block Set

Pair of matched blocks used for positioning and holding workpieces or for use as stops on granite surface plates, a coordinate measuring set-up, a machine-tool or other applications - Each block are precision ground.



No	=		
06769004	Positioning block set, precision ground	mm 75 x 50 x 25	in 2.95 x 1.95 x 0.98



Brown & Sharpe Adjustable Parallels

Set consists of 6 adjustable parallels.

Used as parallel pads, setting standards for measuring instruments or gauges for checking internal dimensions on parallel surfaces.

Each parallel consists of two tapered parts dovetailed together. – Two tightening screws lock the parallels to the size required.



Hardened steel



Supplied with a PH 1 screwdriver

No	=			
06769010 Adjustable parallel set				
Consisting of:				
	=			
		Height mm	Length mm	Width mm
1 parallel		10 ÷ 13	44	7
1 parallel		13 ÷ 17	54	7
1 parallel		17 ÷ 24	68	7
1 parallel		24 ÷ 33	90	7
1 parallel		33 ÷ 44	106	7
1 parallel		44 ÷ 57	129	7



ROCH Flexible Rules

In spring stainless steel - Divisions of 1 mm and 0.5 mm.









Class CE II



Stainless spring-loaded steel



					
			Length mm	Width mm	Thickness mm
0951750181	ROCH flexible rule L = 200 mm		200	13	0.5
0951750182	ROCH flexible rule L = 300 mm		300	13	0.5
0951750184	ROCH flexible rule L = 500 mm		500	18	0.5
0951750187	ROCH flexible rule L = 1000 mm		1000	18	0.5





 Length L = 100 mm,
Width = 13 mm max.

 Alloyed steel

 Blades not supplied
individually

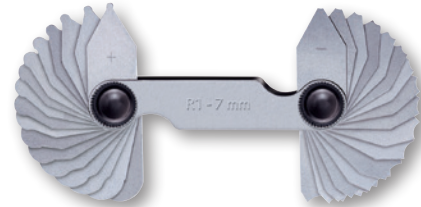
ROCH Thickness Gauges







No	=				
0951753013	ROCH thickness gauge with 13 blades; 0,05 to 1,0 mm	0,05 ÷ 0,3 / 0,4 ÷ 1,0	0,05 / 0,1	0.001968 ÷ 0.003937	6/7
0951753014	ROCH thickness gauge with 20 blades; 0,05 to 1,0 mm	0,05 ÷ 1,0	0,05	0.001968 ÷ 0.003937	20
0951753015	ROCH thickness gauge with 21 blades; 0,1 to 0,2 mm	0,1 ÷ 2,0	0,1 + 1 x 0,05	0.003937 ÷ 0.07874	21

ROCH Radius Gauges

Set of radius gauges with concave and convex blades.
Designed for visual inspection of radii.






No	=				
0951753001	ROCH radius gauge 2 x 17 blades	0,1	1,0 ÷ 2,75 / 3,0 ÷ 7,0	0,25 / 0,5	2 x 17
0951753002	ROCH radius gauge 2 x 16 blades	0,15	7,5 ÷ 15,0	0,5	2 x 16
0951753003	ROCH radius gauge 2 x 15 blades	0,2	15,5 ÷ 19,5 / 20,0 ÷ 25,0	0,2	2 x 15

ROCH Screw Pitch Gauges

60° flank angles for ISO metric threads
or 55° for Whitworth threads.



No	=			
0951753045	ROCH screw pitch gauge for ISO 60° threads	0,25 / 0,3 / 0,35 / 0,4 / 0,45 / 0,5 / 0,6 / 0,7 / 0,75 / 0,8 / 0,9 / 1,0 / 1,25 / 1,5 / 1,75 / 2,0 / 2,5 / 3,0 / 3,5 / 4,0 / 4,5 / 5,0 / 5,5 / 6,0	–	ISO 60° mm
0951753046	ROCH screw pitch gauge – Whitworth 55° threads	–	62 / 60 / 48 / 40 / 36 / 32 / 30 / 28 / 26 / 25 / 24 / 22 / 20 / 19 / 18 / 16 / 14 / 13 / 12 / 11 / 10 / 8 / 7 / 6 / 5 / 4,5 / 4	Whitworth 55° (threads per inch)

 Stainless steel

 Blades are not supplied
individually

 Alloyed steel

 Blades are not supplied
individually







ROCH Portable Magnifier

With a folding handle and additional magnifier. – Retractable support.

 Solid resistant plastic



No	=				
0951754511	ROCH portable magnifier	Large magnifier 3x	Small magnifier 10x	mm 80 x 45	Small magnifier, mm 13

